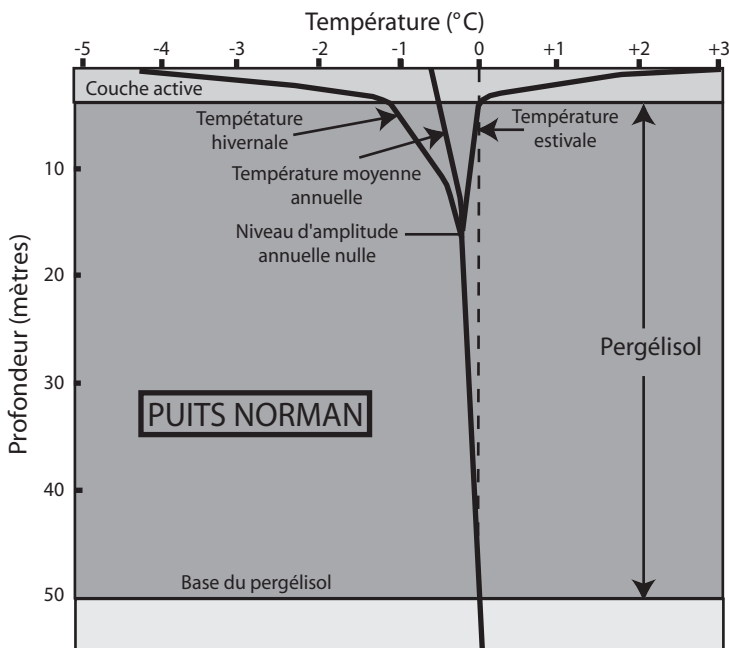
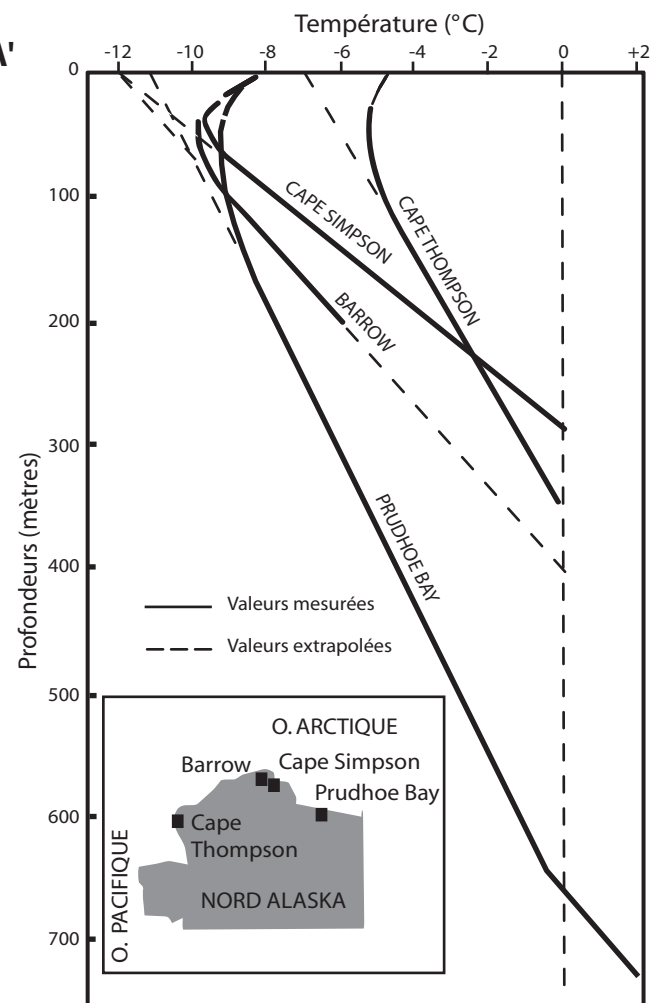
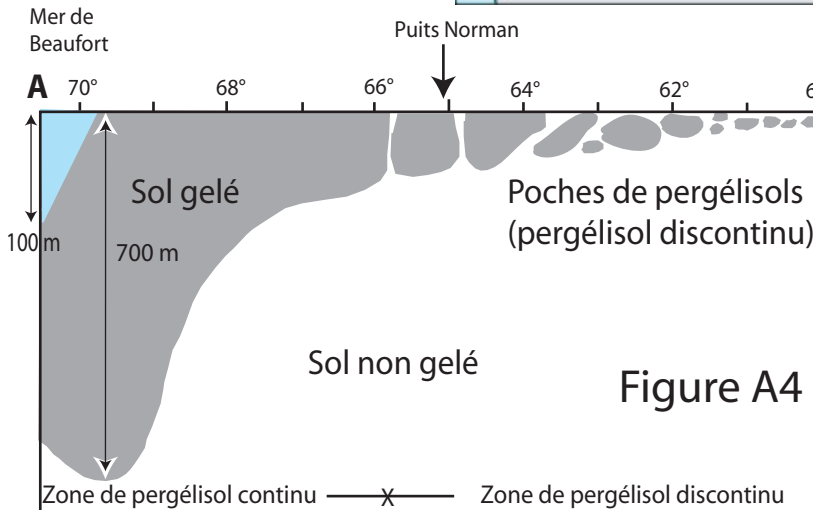
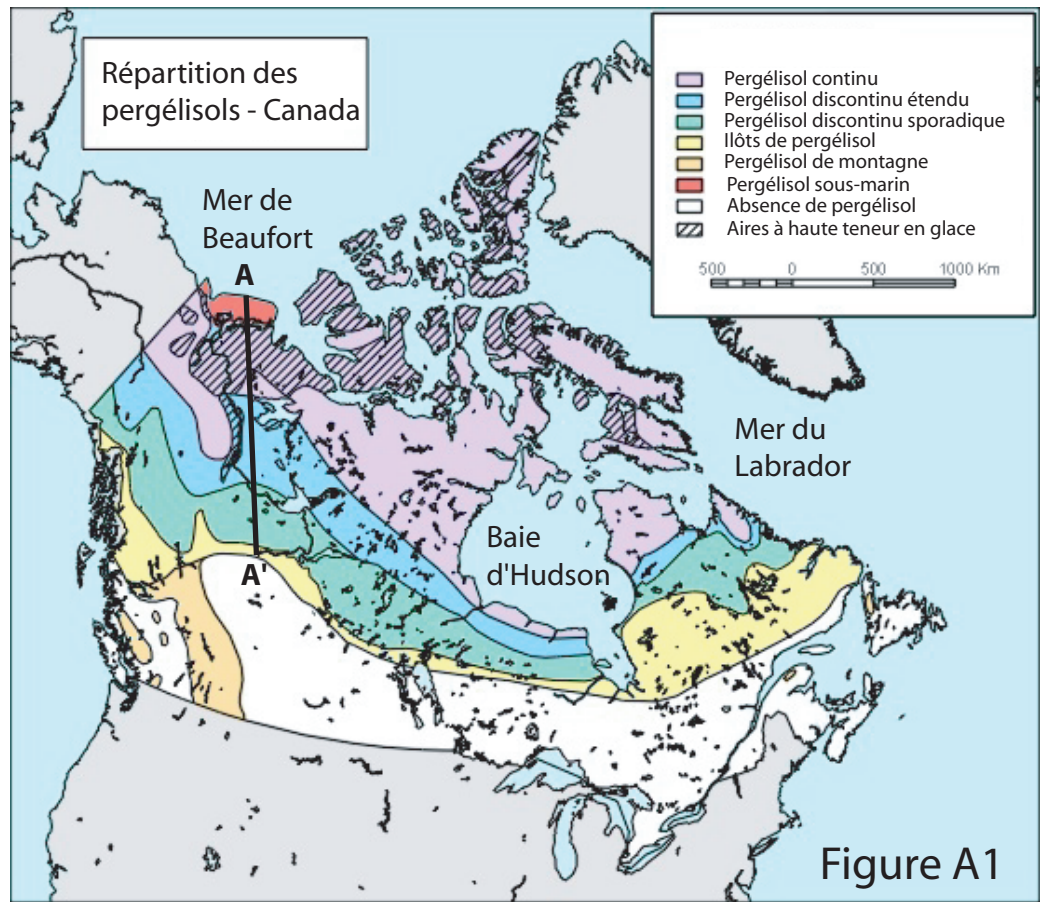


DOCUMENT A



DOCUMENT B

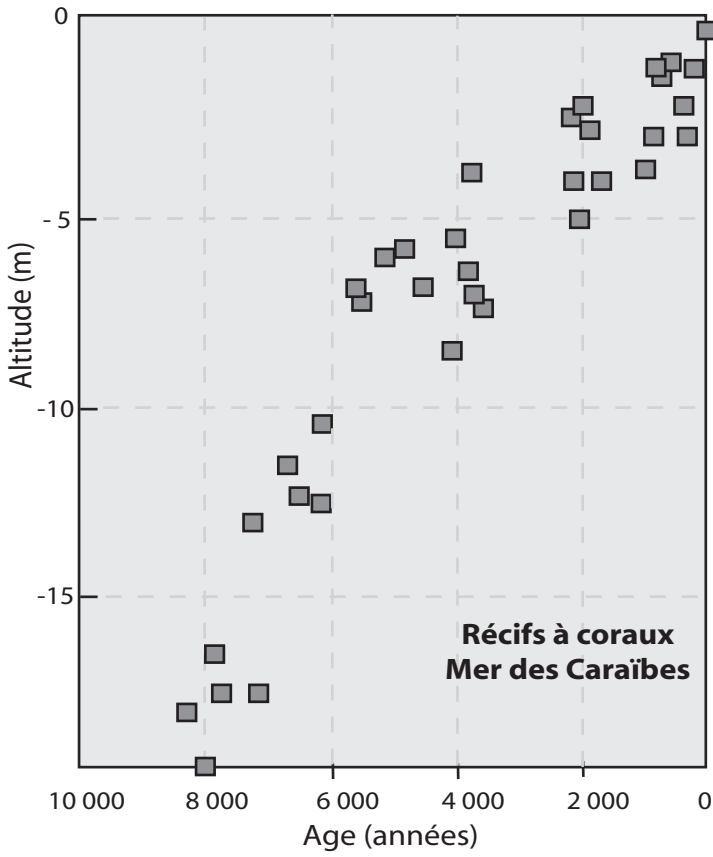


Figure B1

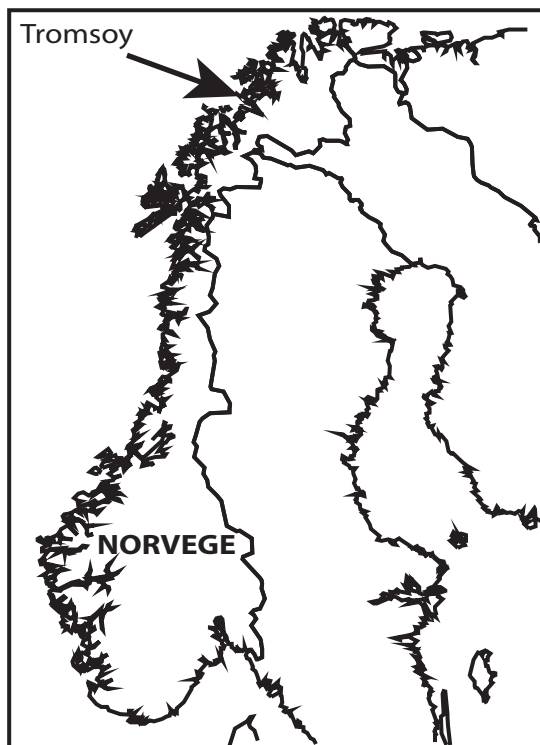


Figure B2

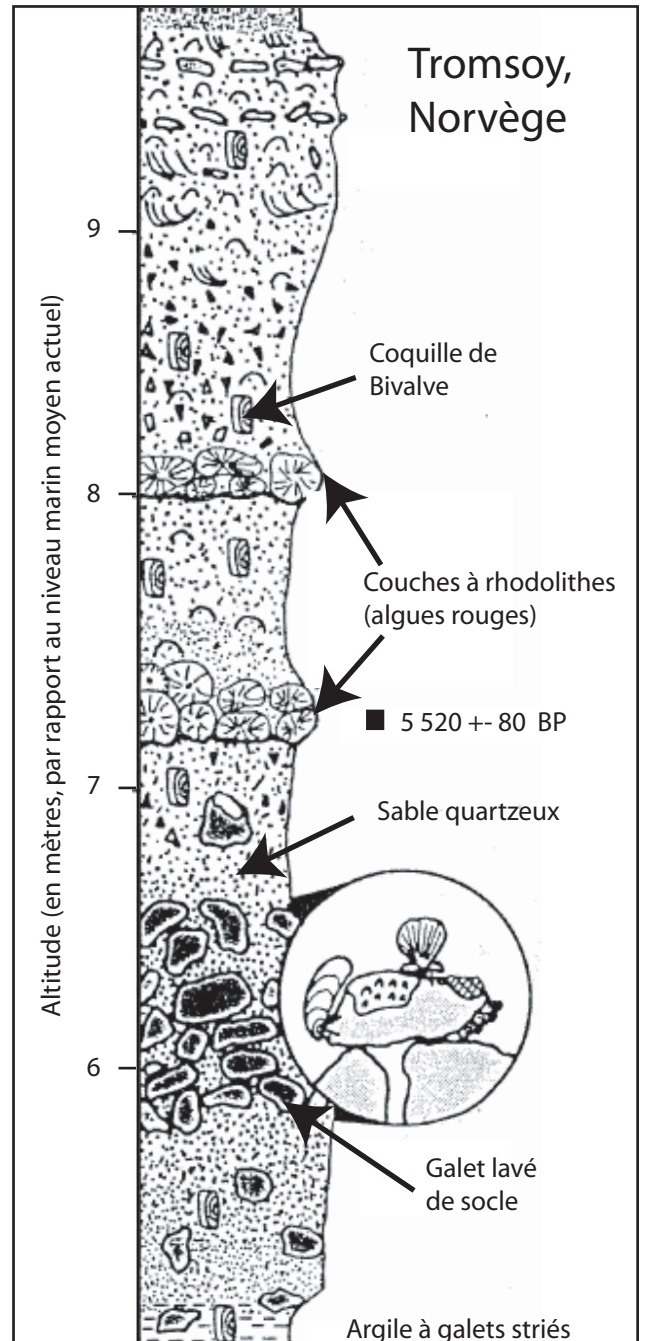


Figure B3

DOCUMENT C

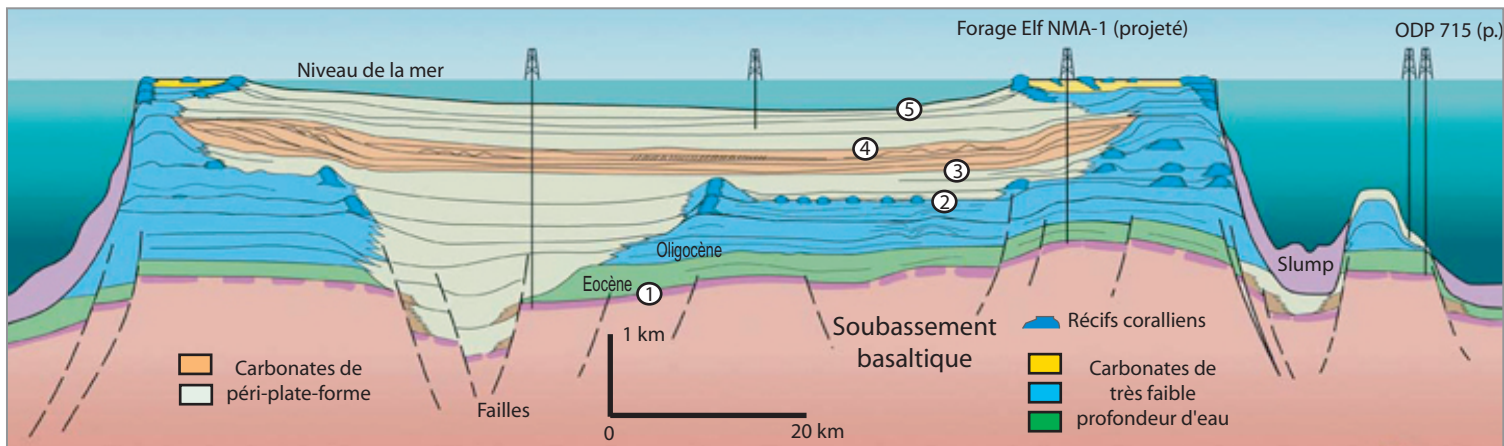


Figure C1 : Coupe transversale de la ride des Maldives (dérivée d'une ligne sismique)

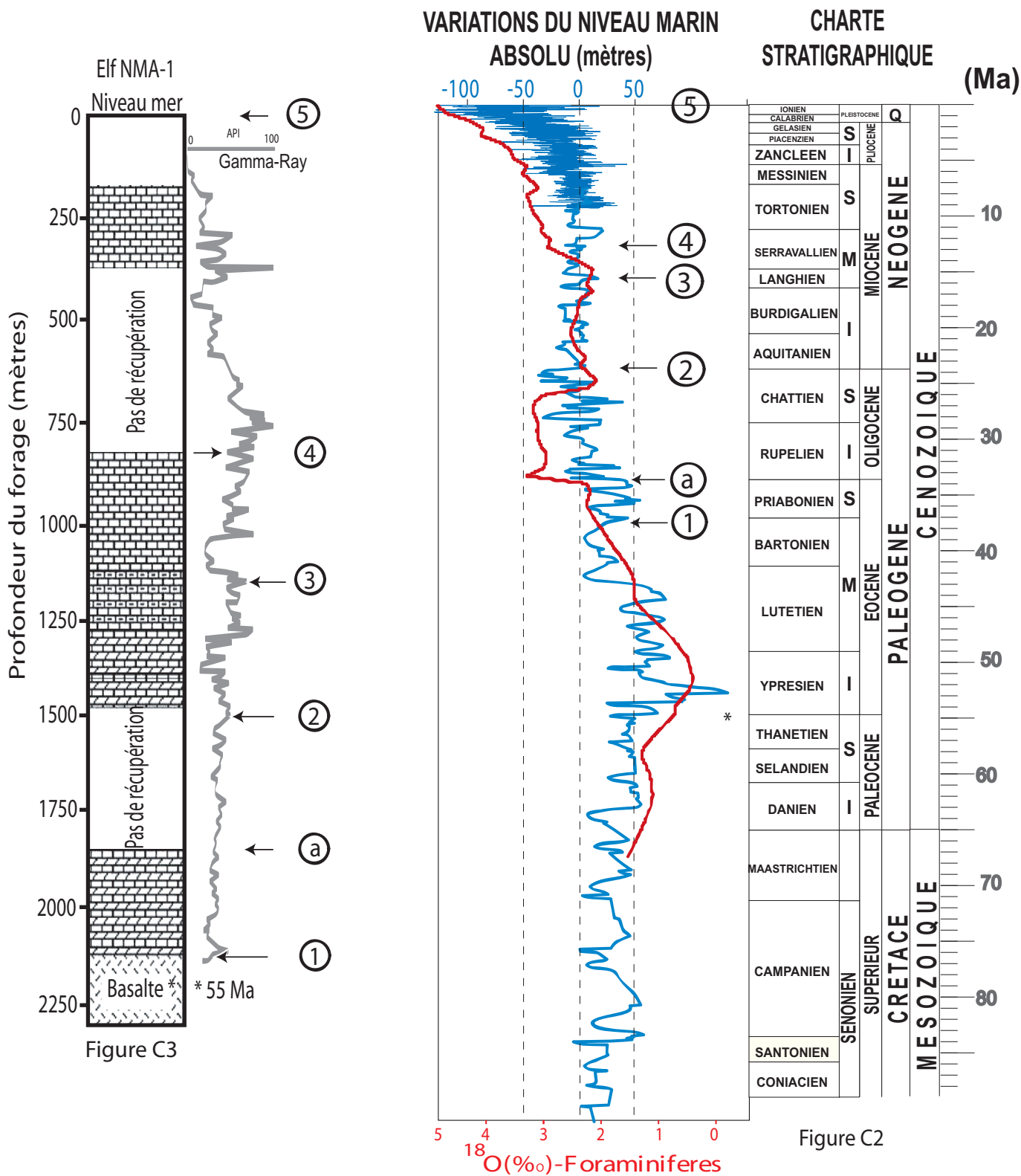


Figure C3

Figure C2

DOCUMENT D

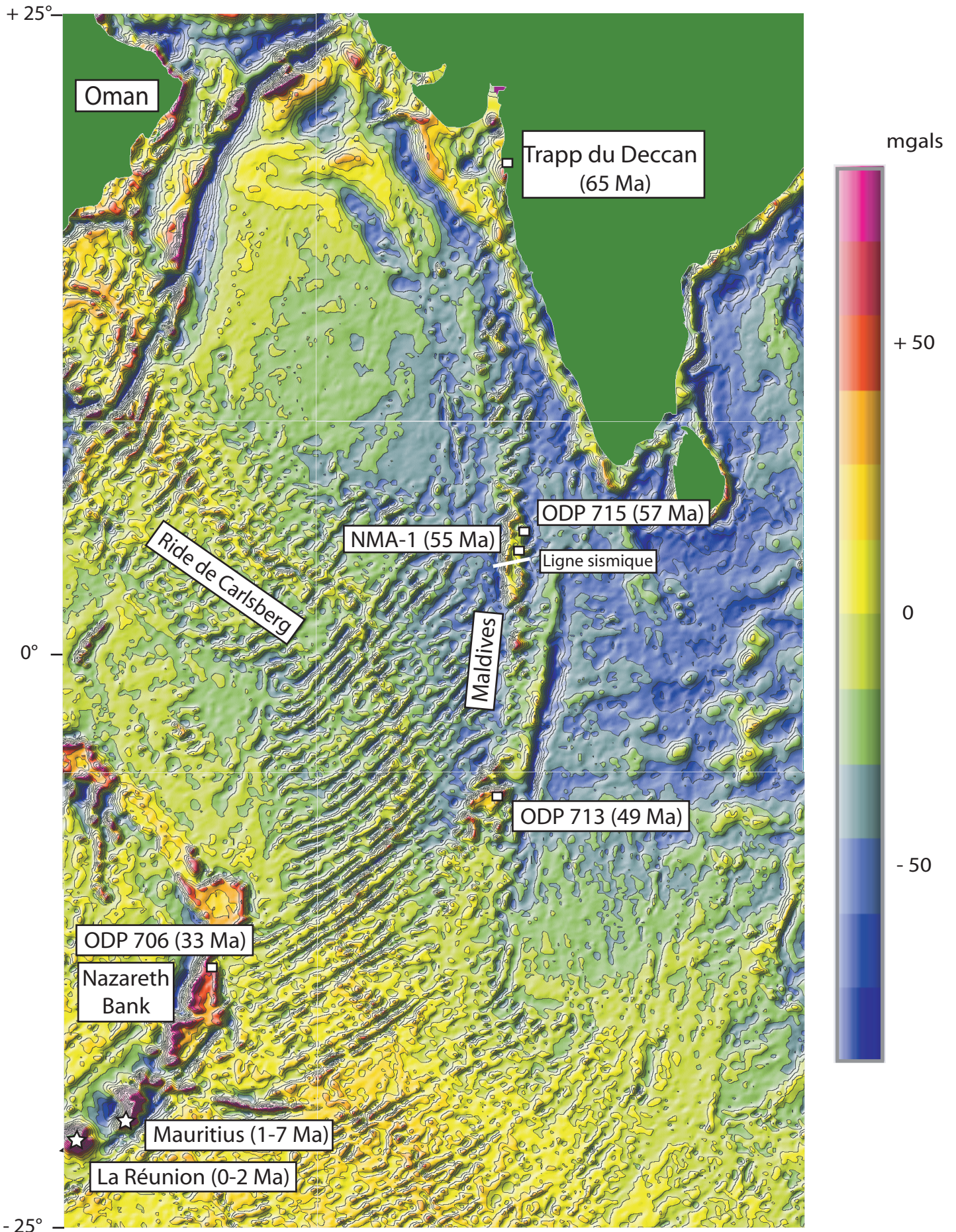


Figure D1 : Carte des anomalies gravimétriques de l'Océan Indien ; Emplacements et âges des édifices basaltiques aériens et sous-marins